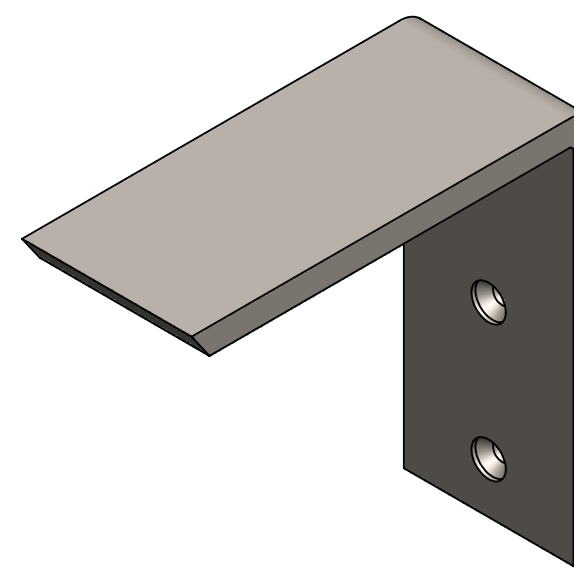


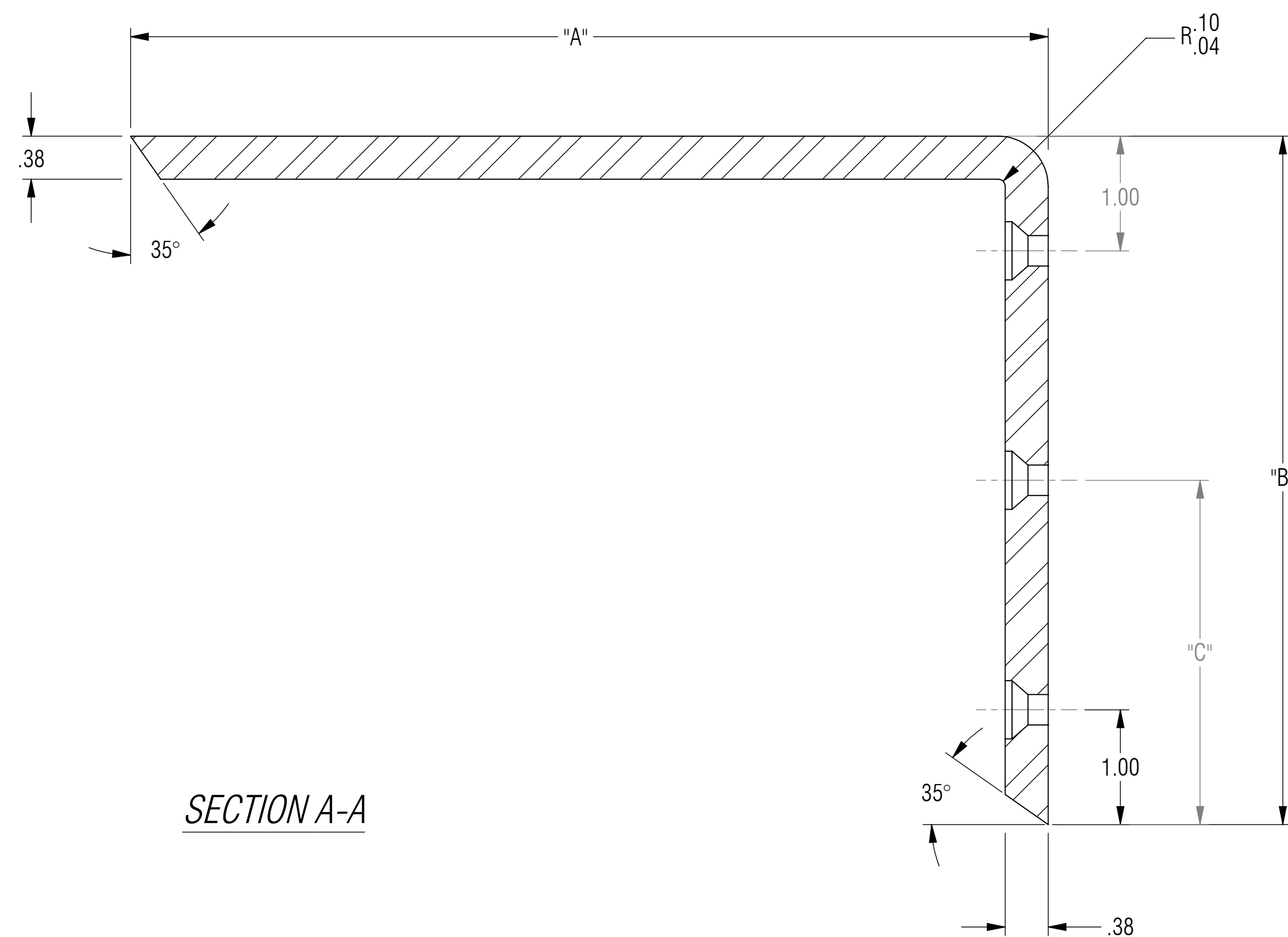
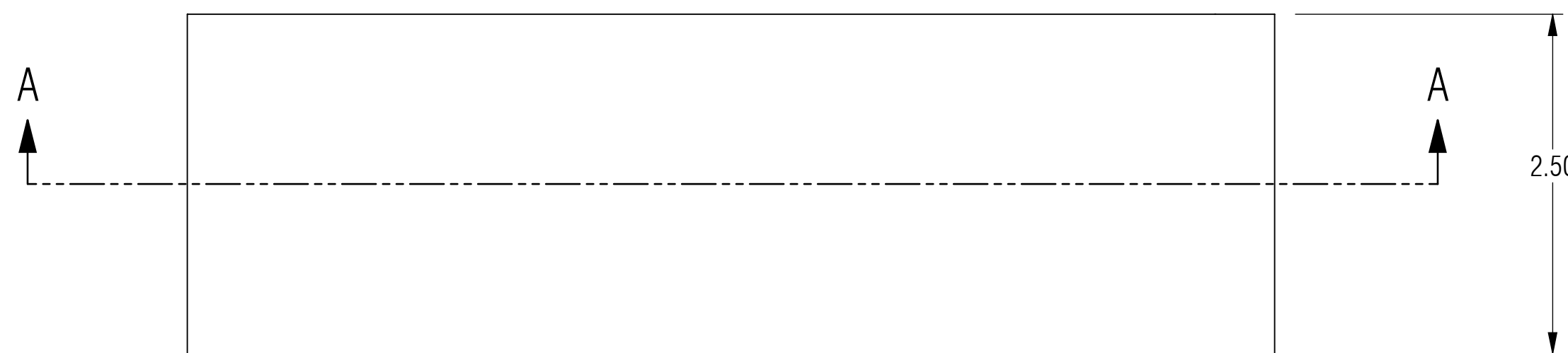
NOTES: UNLESS OTHERWISE SPECIFIED

- 1 MATERIAL: ASTM A36, HOT ROLLED STEEL, OR CENTERLINE STEEL, LLC APPROVED EQUIVALENT.
- 2 ALL DIMENSIONS ARE TO THEORETICAL SHARP.
- 3 REMOVE BURRS AND BREAK ALL SHARP EDGES .03 MAX.
- 4 ALL DIMENSIONS ARE IN INCHES UNLESS STATED OTHERWISE.
- 5 PARTS SHALL BE FREE OF GREASE AND CUTTING FLUID.
- 6 POWDER COAT PER MIL-PRF-24712A (TYPE 3, CLASS 3)

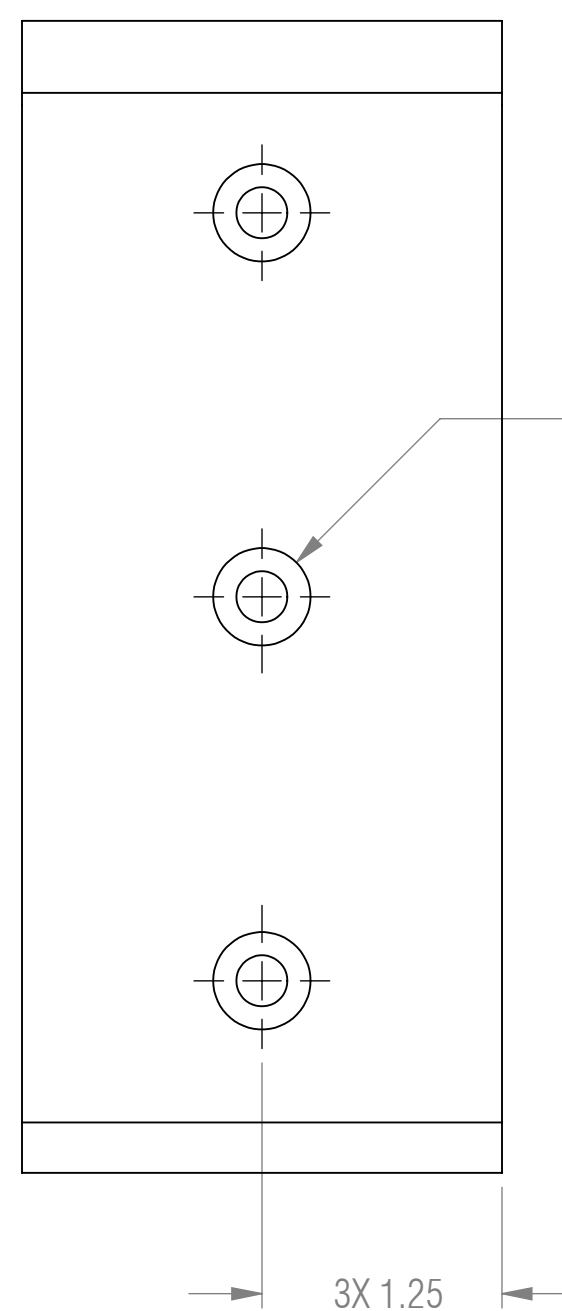


ISOMETRIC VIEW FOR REFERENCE ONLY

REVISION STATUS - ALL SHEETS ARE THE SAME REVISION				
ZONE	REV.	DESCRIPTION	DATE	APPROVED
	X1	DEVELOPMENT	07/13/2013	KRH
	X2	MODIFIED CONFIGURATION TABLE ADDED DIMENSION "B" ADDED DIMENSION "C" MODIFIED SHEET THICKNESS TOLERANCE (NOW) .38 (WAS) .375	07/15/2013	KRH



SECTION A-A



3X \varnothing .27 THRU ALL
 \sphericalangle \varnothing .51 X 82°
 \sqsubset \varnothing .51 ∇ .06

CONFIGURATION TABLE			
	"A"	"B"	"C"
CSP-0013-6	6.00	6.00	3.00
CSP-0013-8	8.00	6.00	3.00
CSP-0013-10	10.00	8.00	4.00
CSP-0013-12	12.00	10.00	5.00
CSP-0013-14	14.00	10.00	5.00

RELEASED

UNLESS OTHERWISE SPECIFIED: DIMENSIONS ARE IN INCHES		ENGINEER		<p>A CENTERLINE STEEL, LLC DIVISION</p>
TOLERANCES ARE:		ENGINEER		
ANGLES		ENGINEER		
.XX ± .01	XX° ± 1°	CHECKED	CAS 07/15/2013	
.XXX ± .005		DRAWN	KRH 07/13/2013	
INTERPRET DRAWINGS IN ACCORDANCE WITH:		MANAGER APPROVAL		THE INFORMATION ON THIS DRAWING IS PROPRIETARY AND SHALL NOT BE DISCLOSED, USED, OR DUPLICATED FOR PROCUREMENT OR MANUFACTURING PURPOSES WITHOUT THE EXPRESS WRITTEN CONSENT OF CENTERLINE STEEL, LLC
ASME Y14.100 ENGINEERING DRAWING PRACTICES	ASME Y14.38 ABBREVIATIONS	THIRD ANGLE PROJECTION		
ASME Y14.5 DIMENSIONING AND TOLERANCING	ASME Y14.6 SCREW THREAD REPRESENTATION			SIZE D CAGE CODE DRAWING NO CSP-0013 REV X2
ASME Y14.8 CASTINGS, FORGINGS & MOLDED PARTS	AWS A2.4 WELDING SYMBOLS	SCALE 1:1		SHEET 1 OF 1
IEEE STD 315 SYMBOLS FOR ELECTRICAL AND ELECTRONIC DIAGRAMS				